

New Nordic Group

Norway | Bangkok | Pattaya | Koh Samui | Chumphon | Phuket | Philippines

SEPTEMBER 2016



New Nordic
KOH SAMUI
LAMAI HOTEL AND RESORT

3D FOR ILLUSTRATION PURPOSES ONLY

Our newest project is in the middle of Lamai Center only a 3 minute walk to the Lamai entertainment/restaurant areas and a short 5 minute walk to the beach.



**CONSTRUCTION
STARTS THIS YEAR!**







New Nordic Group

- An oasis of accommodation opportunities, resorts, restaurants, shops and entertainment

The New Nordic Group has since 2009 developed and constructed high quality condominium buildings with the goal of creating a holiday village where residents and guests can enjoy a carefree lifestyle. As a part of this vision they do not only offer its owners, who buy both to stay and to invest, a unit or a bed. When you purchase a unit from New Nordic you become a part of its community which consists of residences, shops, restaurants, markets, spas and saloons. The New Nordic Group operates their own construction company, property management company, travel agency, resort staff and they even have their own beach!

The New Nordic Headquarters is located in the majestic hill of Pratamnak Hill, in between the busy city life of Pattaya, family friendly Jomtien and a long sandy beach. Here they occupy over 50 rai in total (80,000 square meters). Over the last few years, the company has expanded beyond the borders of this hill and today they have also offices in Tønsberg (Norway), Bangkok (Thailand), Philippines (Angeles), Koh Samui (Thailand) and Chumphon (Thailand).



NEW NORDIC GROUP IS EXPANDING TO KOH SAMUI

Koh Samui is one of Thailand's largest islands, located in the Gulf of Thailand. The island covers a total area of 228,7 km², and has white beaches and azure blue waters surrounding it. Here visitors can enjoy a wide range of activities and entertainment, such as beautiful mountain scenery with waterfalls, historical monuments, a buzzing nightlife, a modern shopping mall and trips to nearby smaller islands. In Koh Samui they also have some of the best restaurants, high luxury resorts and a variety of different spas that other islands can envy them.

In 2016, the New Nordic Group started its first two projects in Koh Samui: Koh Samui Beachfront Resort and Koh Samui Lamai Hotel and Resort. Koh Samui Beachfront Resort is located on the beach, a short taxi drive from the town centre of Lamai. Koh Samui Lamai Hotel and Resort is located at the heart of the town of Lamai, with restaurants, entertainment and shops right on the doorstep.



**NEW NORDIC KOH SAMUI
PROJECTS AND INVESTMENT DETAILS**





New Nordic **KOH SAMUI** **LAMAI HOTEL AND RESORT**

Construction start from December 2016 - May 2018

New Nordic Koh Samui Lamai Hotel and Resorts has a perfect location at the centre of the town of Lamai, which is the second largest town on the island. Lamai has everything any guest or permanent resident would need, with international restaurants, shops and bars – without the town losing its authenticity and “Thai charm”. Here you can find some of the best restaurants in Thailand, easy style markets, a Thai boxing area and many stylish and unique bars as your closest neighbour. Koh Samui Lamai Hotel and Resorts is located down one of the side streets of Lamai, so although it is only a 1 minute walk away the guests and owners will still get the privacy and relaxation they would require.

Only a 300-meter walk from Koh Samui Lamai Hotel and Resorts you can find Lamai Beach. This is a long white, sandy beach, still undiscovered by the many sellers you find in other areas of Thailand. The beach is also home to many restaurants and bars, where they have breath-taking fire shows after the sun has gone down behind the horizon.



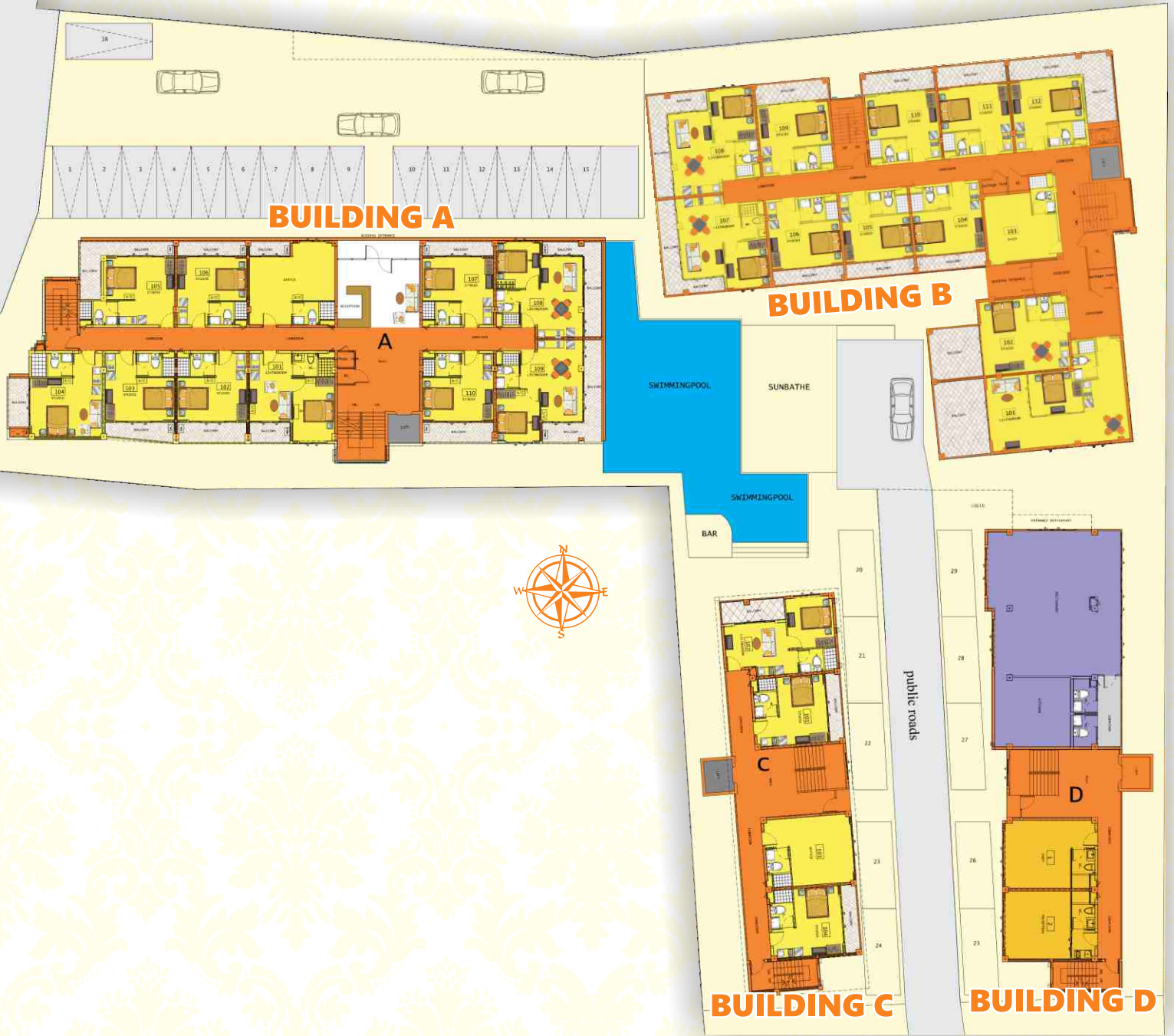


FACILITIES

- ✓ 2 reception areas
- ✓ Private parking
- ✓ Swimming pool
- ✓ Restaurants
- ✓ Pool bar
- ✓ Shops
- ✓ High speed internet



FLOOR PLAN



FLOOR PLAN

BUILDING A



FIRST FLOOR



SECOND FLOOR

FLOOR PLAN

BUILDING A



THIRD FLOOR



FOURTH FLOOR

FLOOR PLAN

BUILDING B

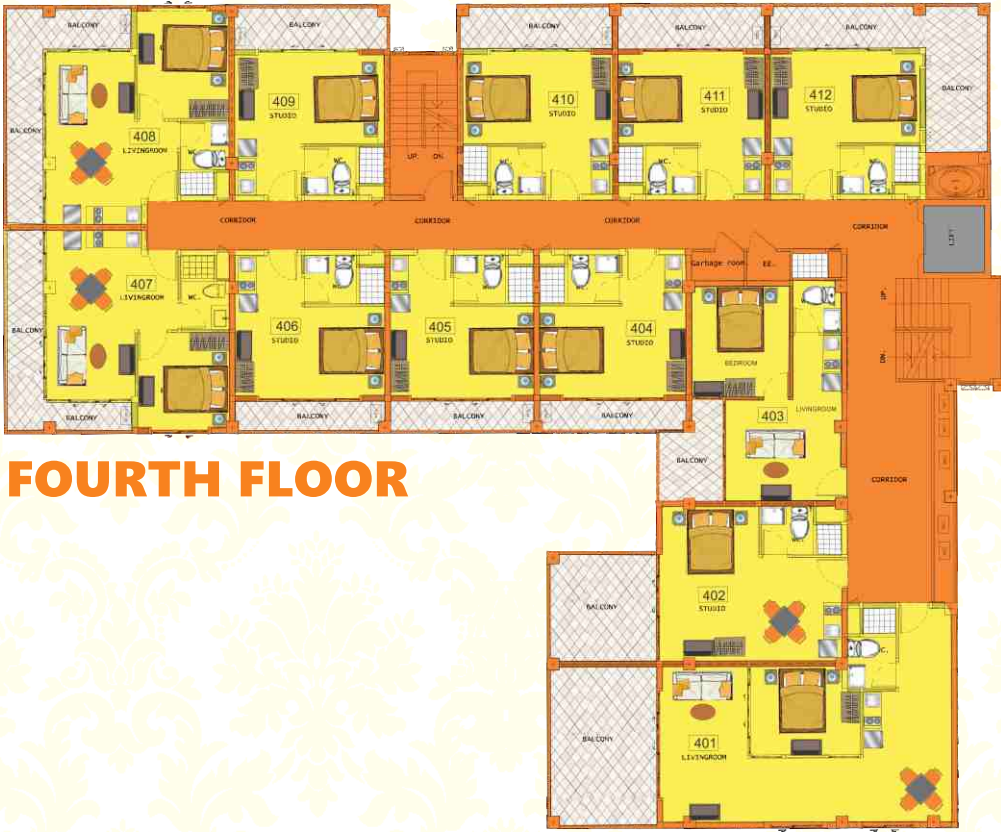


FLOOR PLAN

BUILDING B



THIRD FLOOR



FOURTH FLOOR

FLOOR PLAN

BUILDING C: THE HOTEL



FLOOR PLAN

BUILDING C: THE HOTEL



THIRD FLOOR



FOURTH FLOOR

FLOOR PLAN

BUILDING D



FIRST FLOOR



SECOND FLOOR

FLOOR PLAN

BUILDING D



THIRD FLOOR



FOURTH FLOOR



PRICE LIST

REMAINING UNITS KOH SAMUI LAMAI

BUILDING A

N-SML-A-103

Studio with one bathroom 30.00 sq/m on 1st floor with balcony against south. Price included kitchen, furniture and decoration package.

Baht 3,000,000.-

N-SML-A-104

Studio with one bathroom 35.00 sq/m on 1st floor corner unit with balcony against west. Price included kitchen, furniture and decoration package.

Baht 3,500,000.-

N-SML-A-105

Studio with one bathroom 38.50 sq/m on 1st floor corner unit with balcony against west/north. Price included kitchen, furniture and decoration package.

Baht 3,465,000.-

N-SML-A-107

Studio with one bathroom 31.50 sq/m on 1st floor with balcony against north. Price included kitchen, furniture and decoration package.

Baht 3,150,000.-

N-SML-A-108

One bedroom with one bathrooms 37.00 sq/m on 1st floor corner unit with balcony against north/east. Price included kitchen, furniture and decoration package.

Baht 4,440,000.-

N-SML-A-109

One bedroom with one bathroom 37.00 sq/m on 1st floor corner unit with balcony against east/south. Price included kitchen, furniture and decoration package.

Baht 4,440,000.-

N-SML-A-110

Studio with one bathroom 31.50 sq/m on 1st floor with balcony against south. Price included kitchen, furniture and decoration package.

Baht 3,150,000.-

N-SML-A-204

Studio with one bathroom 35.00 sq/m on 2nd floor corner unit with balcony against west. Price included kitchen, furniture and decoration package.

Baht 3,675,000.-

N-SML-A-205

Studio with one bathroom 38.50 sq/m on 2nd floor corner unit with balcony against west/north. Price included kitchen, furniture and decoration package.

Baht 3,850,000.-

N-SML-A-206

Studio with one bathroom 30.00 sq/m on 2nd floor with balcony against north. Price included kitchen, furniture and decoration package.

Baht 3,000,000.-

N-SML-A-207

One bedroom with one bathroom 35.00 sq/m on 2nd floor with balcony against north. Price included kitchen, furniture and decoration package.

Baht 3,500,000.-

N-SML-A-210

One bedroom with one bathroom 37.00 sq/m on 2nd floor corner unit with balcony against north/east. Price included kitchen, furniture and decoration package.

Baht 4,625,000.-

N-SML-A-212

Studio with one bathroom 31.50 sq/m on 2nd floor with balcony against south. Price included kitchen, furniture and decoration package.

Baht 3,465,000.-

N-SML-A-303

Studio with one bathroom 30.00 sq/m on 3rd floor corner unit with balcony against west. Price included kitchen, furniture and decoration package.

Baht 3,300,000.-

N-SML-A-304

Studio with one bathroom 35.00 sq/m on 3rd floor corner unit with balcony against west. Price included kitchen, furniture and decoration package.

Baht 3,850,000.-

N-SML-A-305

Studio with one bathroom 38.50 sq/m on 3rd floor corner unit with balcony against west/north. Price included kitchen, furniture and decoration package.

Baht 4,042,500.-

N-SML-A-306

Studio with one bathroom 30.00 sq/m on 3rd floor with balcony against north. Price included kitchen, furniture and decoration package.

Baht 3,150,000.-

N-SML-A-309

Studio with one bathroom 31.50 sq/m on 3rd floor with balcony against north. Price included kitchen, furniture and decoration package.

Baht 3,307,500.-



PRICE LIST

REMAINING UNITS KOH SAMUI LAMAI

BUILDING A

N-SML-A-310

One bedroom with one bathroom 37.00 sq/m on 3rd floor corner unit with balcony against north/east. Price included kitchen, furniture and decoration package.

Baht 4,810,000.-

N-SML-A-311

One bedroom with one bathroom 37.00 sq/m on 3rd floor corner unit with balcony against east/south. Price included kitchen, furniture and decoration package.

Baht 4,810,000.-

N-SML-A-312

Studio with one bathroom 31.50 sq/m on 3rd floor with balcony against south. Price included kitchen, furniture and decoration package.

Baht 3,465,000.-

N-SML-A-404

Studio with one bathroom 35.00 sq/m on 4th floor corner unit with balcony against west. Price included kitchen, furniture and decoration package.

Baht 4,025,000.-

N-SML-A-405

Studio with one bathroom 38.50 sq/m on 4th floor corner unit with balcony against west/north. Price included kitchen, furniture and decoration package.

Baht 4,235,000.-

N-SML-A-410

One bedroom with one bathroom 37.00 sq/m on 4th floor corner unit with balcony against north/east. Price included kitchen, furniture and decoration package.

Baht 5,180,000.-

N-SML-A-411

One bedroom with one bathroom 37.00 sq/m on 4th floor corner unit with balcony against east/south. Price included kitchen, furniture and decoration package.

Baht 5,180,000.-

N-SML-A-412

Studio with one bathroom 31.50 sq/m on 4th floor with balcony against south. Price included kitchen, furniture and decoration package.

Baht 3,622,500.-

BUILDING B

N-SML-B-101

One bedroom with one bathroom 74.50 sq/m on 1st floor with balcony against east. Price included kitchen, furniture and decoration package.

Baht 8,940,000.-

N-SML-B-102

Studio with one bathroom 44.00 sq/m on 1st floor with balcony against east. Price included kitchen, furniture and decoration package.

Baht 5,280,000.-

N-SML-B-103

Studio with one bathroom 25.50 sq/m on 1st floor Price included kitchen, furniture and decoration package.

Baht 5,100,000.-

N-SML-B-104

Studio with one bathroom 31.50 sq/m on 1st floor corner unit with balcony against south. Price included kitchen, furniture and decoration package.

Baht 3,780,000.-

N-SML-B-105

Studio with one bathroom 31.50 sq/m on 1st floor corner unit with balcony against south. Price included kitchen, furniture and decoration package.

Baht 3,780,000.-

N-SML-B-106

Studio with one bathroom 31.50 sq/m on 1st floor with balcony against south. Price included kitchen, furniture and decoration package.

Baht 3,780,000.-

N-SML-B-107

One bedroom with one bathroom 49.50 sq/m on 1st floor with balcony against east/south. Price included kitchen, furniture and decoration package.

Baht 5,940,000.-

N-SML-B-108

One bedroom with one bathrooms 49.50 sq/m on 1st floor corner unit with balcony against north/east. Price included kitchen, furniture and decoration package.

Baht 4,950,000.-

N-SML-B-112

Studio with one bathroom 44.50 sq/m on 1st floor with balcony against north/west. Price included kitchen, furniture and decoration package.

Baht 4,450,000.-



PRICE LIST

REMAINING UNITS KOH SAMUI LAMAI

BUILDING B

N-SML-B-201

One bedroom with one bathrooms 74.50 sq/m on 2nd floor corner unit with balcony against east. Price included kitchen, furniture and decoration package.

Baht 8,567,500.-

N-SML-B-202

Studio with one bathroom 44.00 sq/m on 2nd floor with balcony against east. Price included kitchen, furniture and decoration package.

Baht 5,060,000.-

N-SML-B-203

One bedroom with one bathrooms 40.00 sq/m on 2nd floor corner unit with balcony against east. Price included kitchen, furniture and decoration package.

Baht 4,600,000.-

N-SML-B-204

Studio with one bathroom 31.50 sq/m on 2nd floor with balcony against south. Price included kitchen, furniture and decoration package.

Baht 3,622,500.-

N-SML-B-205

Studio with one bathroom 31.50 sq/m on 2nd floor with balcony against south. Price included kitchen, furniture and decoration package.

Baht 3,622,500.-

N-SML-B-206

Studio with one bathroom 31.50 sq/m on 2nd floor with balcony against south. Price included kitchen, furniture and decoration package.

Baht 3,622,500.-

N-SML-B-207

One bedroom with one bathrooms 49.50 sq/m on 2nd floor corner unit with balcony against east/south. Price included kitchen, furniture and decoration package.

Baht 5,692,500.-

N-SML-B-208

One bedroom with one bathrooms 49.50 sq/m on 2nd floor corner unit with balcony against north/east. Price included kitchen, furniture and decoration package.

Baht 5,445,000.-

N-SML-B-209

Studio with one bathroom 31.50 sq/m on 2nd floor with balcony against north. Price included kitchen, furniture and decoration package.

Baht 3,307,500.-

N-SML-B-210

Studio with one bathroom 31.50 sq/m on 2nd floor with balcony against north. Price included kitchen, furniture and decoration package.

Baht 3,307,500.-

N-SML-B-211

Studio with one bathroom 31.50 sq/m on 2nd floor with balcony against north. Price included kitchen, furniture and decoration package.

Baht 3,307,500.-

N-SML-B-212

Studio with one bathroom 44.50 sq/m on 2nd floor with balcony against north/west. Price included kitchen, furniture and decoration package.

Baht 4,895,000.-

N-SML-B-301

One bedroom with one bathroom 74.50 sq/m on 3rd floor corner unit with balcony against east. Price included kitchen, furniture and decoration package.

Baht 8,940,000.-

N-SML-B-302

Studio with one bathroom 44.00 sq/m on 3rd floor corner unit with balcony against east. Price included kitchen, furniture and decoration package.

Baht 5,280,000.-

N-SML-B-303

One bedroom with one bathroom 40.00 sq/m on 3rd floor with balcony against east. Price included kitchen, furniture and decoration package.

Baht 4,800,000.-

N-SML-B-304:

Studio with one bathroom 31.50 sq/m on 3rd floor with balcony against south. Price included kitchen, furniture and decoration package.

Baht 3,780,000.-

N-SML-B-305

Studio with one bathrooms 31.50 sq/m on 3rd floor corner unit with balcony against south. Price included kitchen, furniture and decoration package.

Baht 3,780,000.-

N-SML-B-307

One bedroom with one bathrooms 49.50 sq/m on 3rd floor corner unit with balcony against east/south. Price included kitchen, furniture and decoration package.

Baht 5,940,000.-



PRICE LIST

REMAINING UNITS KOH SAMUI LAMAI

BUILDING B

N-SML-B-308

One bedroom with one bathroom 49.50 sq/m on 3rd floor with balcony against north/east. Price included kitchen, furniture and decoration package.

Baht 5,692,500.-

N-SML-B-309

Studio with one bathroom 31.50 sq/m on 3rd floor with balcony against north. Price included kitchen, furniture and decoration package.

Baht 3,465,000.-

N-SML-B-310

Studio with one bathrooms 31.50 sq/m on 3rd floor corner unit with balcony against north. Price included kitchen, furniture and decoration package.

Baht 3,465,000.-

N-SML-B-311

Studio with one bathroom 31.50 sq/m on 3rd floor with balcony against north. Price included kitchen, furniture and decoration package.

Baht 3,465,000.-

N-SML-B-312

Studio with one bathrooms 44.50 sq/m on 3rd floor corner unit with balcony against north/west. Price included kitchen, furniture and decoration package.

Baht 5,117,500.-

N-SML-B-401

One bedroom with one bathroom 74.50 sq/m on 4th floor with balcony against east. Price included kitchen, furniture and decoration package.

Baht 9,685,000.-

N-SML-B-402

Studio with one bathroom 44.00 sq/m on 4th floor with balcony against east. Price included kitchen, furniture and decoration package.

Baht 5,720,000.-

N-SML-B-403

One bedroom with one bathroom 40.00 sq/m on 4th floor with balcony against east. Price included kitchen, furniture and decoration package.

Baht 5,200,000.-

N-SML-B-404

Studio with one bathrooms 31.50 sq/m on 4th floor corner unit with balcony against south. Price included kitchen, furniture and decoration package.

Baht 4,095,000.-

N-SML-B-408

One bedroom with one bathroom 49.50 sq/m on 4th floor with balcony against north/east. Price included kitchen, furniture and decoration package.

Baht 6,187,500.-

N-SML-B-411

Studio with one bathroom 31.50 sq/m on 4th floor corner unit with balcony against north. Price included kitchen, furniture and decoration package.

Baht 3,622,500.-

N-SML-B-412

Studio with one bathroom 44.50 sq/m on 4th floor with balcony against north/west. Price included kitchen, furniture and decoration package.

Baht 5,562,500.-



SPECIAL PRICE
฿ 76MB

BUILDING C "HOTEL"



New Nordic KOH SAMUI LAMAI HOTEL

Construction start from December 2016 - May 2018

New Nordic Koh Samui Lamai Hotel and Resorts has a perfect location at the centre of the town of Lamai, which is the second largest town on the island. The project is perfect for a holiday retreat.

- **10 % rental guarantee or an investment option for 10 years**
- **Cash back 10 % from full payment**





PRICE LIST

REMAINING UNITS KOH SAMUI LAMAI

BUILDING D

N-SML-D-101

Shop with one bathroom 31.00 sq/m on 1st floor

Baht 6,200,000.-

N-SML-D-102

Shop with one bathroom 30.00 sq/m on 1st floor

Baht 6,000,000.-

N-SML-D-201

Studio with one bathroom 35.00 sq/m on 2nd floor with balcony against west. Price included kitchen, furniture and decoration package.

Baht 4,025,000.-

N-SML-D-202

Studio with one bathroom 33.70 sq/m on 2nd floor with balcony against west. Price included kitchen, furniture and decoration package.

Baht 3,875,500.-

N-SML-D-203

One bedroom with one bathroom 47.50 sq/m on 2nd floor corner unit with two balconies against north and west. Price included kitchen, furniture and decoration

Baht 5,700,000.-

N-SML-D-204

Studio with one bathroom 31.00 sq/m on 2nd floor with balcony against west. Price included kitchen, furniture and decoration package.

Baht 3,565,000.-

N-SML-D205

Studio with one bathroom 30.00 sq/m on 2nd floor corner unit with balcony against west. Price included kitchen, furniture and decoration package.

Baht 3,450,000.-

N-SML-D-301

Studio with one bathrooms 35.00 sq/m on 3 rd floor corner unit with balcony against west. Price included kitchen, furniture and decoration package.

Baht 4,200,000.-

N-SML-D-302

Studio with one bathroom 33.70 sq/m on 2nd floor with balcony against west. Price included kitchen, furniture and decoration package.

Baht 4,044,000.-

N-SML-D-303

One bedroom with one bathroom 47.50 sq/m on 3rd floor corner unit with two balconies against north and west. Price included kitchen, furniture and decoration

Baht 5,937,500.-

N-SML-D-304

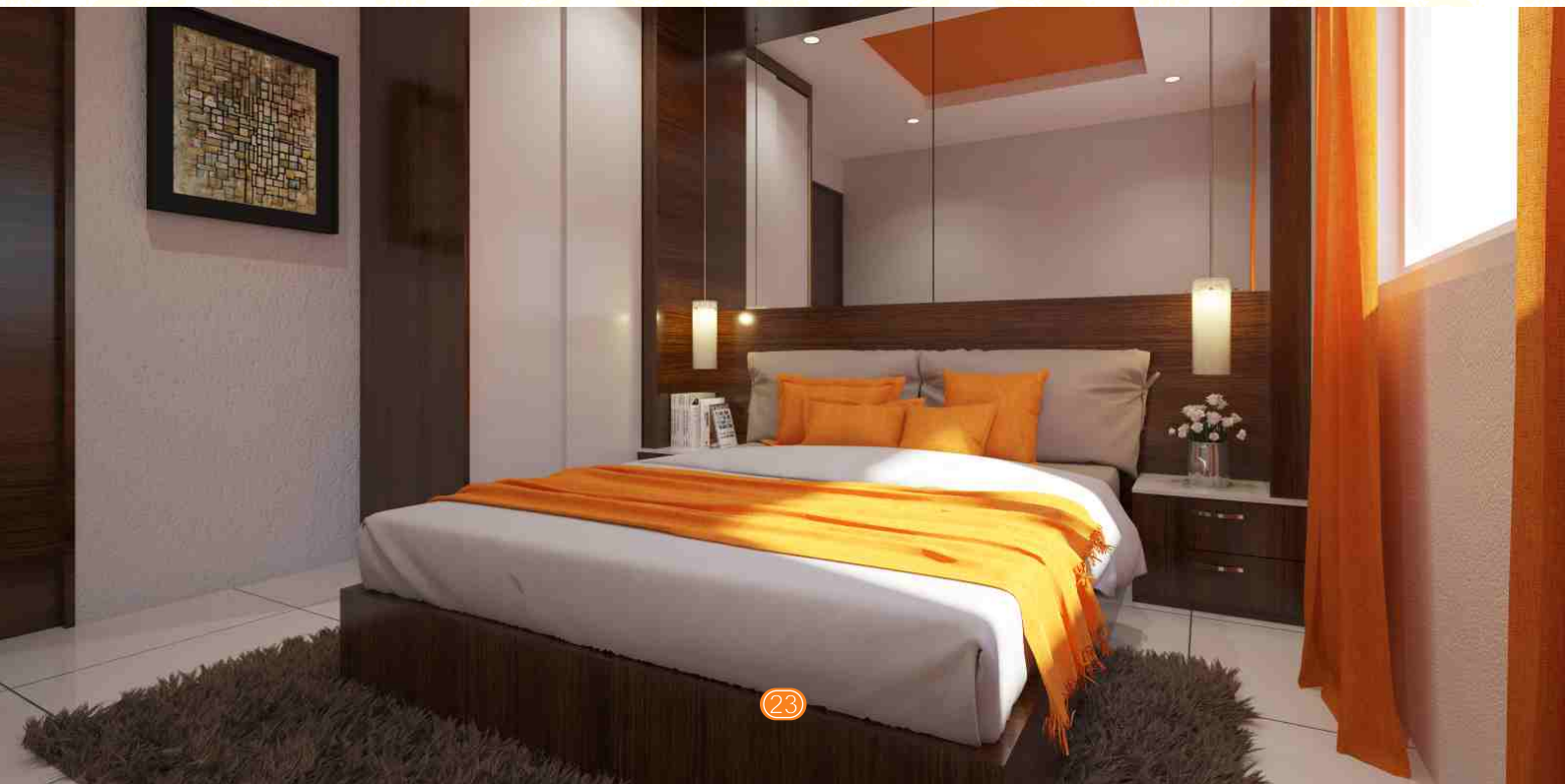
Studio with one bathroom 31.00 sq/m on 3rd floor with balcony against west. Price included kitchen, furniture and decoration package.

Baht 3,720,000.-

N-SML-D-305

Studio with one bathroom 30.00 sq/m on 3rd floor corner unit with balcony against west. Price included kitchen, furniture and decoration package.

Baht 3,600,000.-



**NEW NORDIC SALES
AND INVESTMENT DETAILS**



New Nordic Sales



The New Nordic Group is one of the most new-thinking and innovative corporations in this part of Thailand. Their projects are ranging from exclusive VIP projects such as New Nordic Castle and New Nordic Palace, to family friendly projects with big beach-like swimming pools, breakfast restaurants, shops and massage outlets. The New Nordic Sales Office has its own Sales Office located in Lamai in Koh Samui, right behind to the boxing ring along the main road.

When you invest with the New Nordic Group you get the following:

- ✓ The title deed or leasehold registration
- ✓ Weekly construction updates
- ✓ Our weekly newsletter with the latest updates from the New Nordic Group
- ✓ Close follow-up throughout the whole purchase process
- ✓ A team in the back who believe that making it easy for you makes it easy for us We will follow you through the whole purchase process.



New Nordic Lamai Sales Office

Located in the Center of Lamai, 200 meters from McDonald and 250 meters to the Beach

JAN BERT NUYTEN
General Manager, Koh Samui

25





Investment Details and Purchase Process



10% Yearly Rental Guarantee

If you purchase an apartment like an investment and do not want to go through the hassle of renting it out yourself, you can choose to purchase it with our 10% rental guarantee. This means that after completion you will get a guaranteed return of 10% P.A. The length of the guaranteed return is set at 10 years.



10% Cash Back Option

Our apartments are selling fast, and our projects are often sold out before the building is completed. We therefore offer our customers a 10% cash back option before and during construction, where costumers that pay the full amount will get 10% of the purchase price yearly paid monthly until the completion of the project.



Buy Back Guarantee

In some of our projects we offer costumers that buy in leasehold a buy back guarantee, which means that we guarantee to buy the apartment back from you for the same price as purchased after 5, 10 or 20 years.

Types of ownership

✓ Leasehold

Terms and Conditions

Purchasing process for reservation and purchase of units

Stage 1

Buyer must pay a deposit of 50,000 THB to confirm the purchase

Stage 2

35% of the full purchase price is to be paid upon signing the contract

Stage 3

20% is to be paid when starting the piling

Stage 4

15% is to be paid when starting construction

Stage 5

20% is to be paid when starting on the roof

Stage 6

The remaining 10% is to be paid upon completion

Stage 7

A one-time payment of 500 THB per sqm. is to be paid for the sinking fund

Stage 8

A service fee of 75 THB per sqm. is to be paid monthly

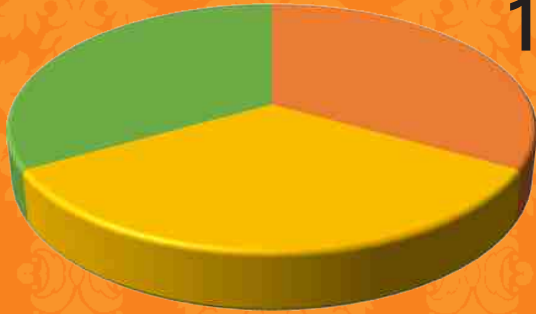


THE NUMBERS



THE BUYERS

1/3 Owned by New Nordic Group



1/3 Buy to stay

1/3 Buy as investment

MAIN NATIONALITIES

-  French
-  Norwegian
-  Russian
-  Thailand
-  Japan
-  Chinese

60% of all customers are repeat customers

OUR OFFICES



OUR PROJECTS

78

Projects in total

46

Completed

17

Under construction

15

To be started



OUR TEAM

860

New Nordic Staff



300+

Construction workers with architects

NEW NORDIC ACCOMMODATION

New Nordic offers luxurious apartments and rooms surrounded by swimming pools, tropical gardens, park facilities and numerous common areas. With a broad variety of accommodations to choose from you will always find a perfect place to call home.



NEW NORDIC FAMILY

This area consists of different buildings with 149 apartments in all sizes. Here you can choose from a broad range of rooms including Superior Room, Superior Twin Room, One-bedroom Superior Suite, Two-bedroom Superior Suite and Three-bedroom Penthouse Suite. Here you can relax and enjoy your stay in our child friendly pool.



NEW NORDIC MARCUS

New Nordic Marcus offers a broad variety of beautiful, spacious and bright rooms. In this building you will have the choice of Deluxe Room, Deluxe Twin Room, One-bedroom Deluxe Suite, One-bedroom Penthouse Suite and Two-bedroom Deluxe Suite. In front of the building you one of our many swimming pools surrounded by palms and sunbeds.

New Nordic Marcus also offers a rooftop bar with an outstanding view of the ocean, a massage centre and our very own restaurant New Nordic's Steak, Grill and Winery.



NEW NORDIC KRISTINE

New Nordic Kristine is located in a quiet area at the edge of the New Nordic area. In this seven-floor building you will be able to choose from our Deluxe Room, One-bedroom Deluxe Suite, Two-bedroom Deluxe Suite and Three bed-room Penthouse Suite.

On the roof you will find an idyllic garden and swimming pool with sunbeds overlooking the ocean.



NEW NORDIC HOLIDAY

These buildings offers a variety of Superior Room, Superior Twin Room, One-bedroom Superior Suite, Two-bedroom Superior Suite and Two-bedroom Penthouse Suite. Here you can enjoy both the central placed swimming pool placed in the middle of the building as well as the rooftop garden and swimming pool.



NEW NORDIC ANITA

New Nordic Anita is a part of Trend Village, located between Soy 4 and Soy 5. The three buildings are decorated in warm red colors, and the area have its own breakfast restaurant, swimming pool area and a wide range of shops. At the heart of this concept you will find the Anita swimming pool, which is great place to relax and tan.



NEW NORDIC TREND

New Nordic Trend is the newest member of the New Nordic family, and offers a variety of Deluxe Room, Deluxe One-bedroom Deluxe Suite and Two-bedroom Deluxe Suites. The three buildings

Trend 4-5-6 consists of a range of different buildings surrounding a swimming pool with a two-meters high waterfall.



NEW NORDIC RESORTS

The New Nordic Resort and New Nordic C-View is divided into several beautiful buildings all decorated with exotic flower arrangements. Here you will find apartments and villas which all have their own unique and personal style. At most of the resort buildings you will find a swimming pool with sunbeds.



NEW NORDIC KOH SAMUI

New Nordic Koh Samui Lamai Hotel and Resorts has a perfect location at the centre of the town of Lamai, which is the second largest town on the island. Lamai has everything any guest or permanent resident would need, with international restaurants, shops and bars – without the town losing its authenticity and "Thai charm".



NEW NORDIC C-VIEW

New Nordic C-View Boutique and Residence consist of 6th floors and 8th floors a total of 214 units. The units range from 25 sqm to 64 sqm. On the higher floors, residents can enjoy striking ocean views, with Koh Lam to the West, Cosy Beach views to the North and Jomtien Bay to the South. C-View Boutique also features a rooftop fitness, swimming pool and lounge area.

NEW NORDIC FEATURES AND FACILITIES

New Nordic is more than just a developer. It is running a full service accommodation site with many different features and facilities. Here is a selection:

- ✓ 24 hours information desks
- ✓ 24 hours security
- ✓ ATM Cash machines on site
- ✓ Breakfast lounges
- ✓ Pool bars
- ✓ Laundry services
- ✓ Daily newspapers
- ✓ Wi-Fi in rooms and public areas
- ✓ Transportation services
- ✓ VIP transportation services
- ✓ Free car parking
- ✓ More than 20 swimming pools
- ✓ Sales office
- ✓ Tour operator and travel agency on site
- ✓ Bicycle / motorbike rentals
- ✓ A Norwegian bakery
- ✓ Several restaurants and bars
- ✓ Several minimarts on site
- ✓ Six New Nordic massage centres
- ✓ New Nordic golf coach and guide
- ✓ A wide range of shops
- ✓ A New Nordic beach
- ✓ A dedicated cleaning team for all public areas
- ✓ Events and entertainment
- ✓ 24 hours IT support



"It's clean ... it's safe ... it's convenient ... and it's always getting better. But the best reason to choose New Nordic for a long-stay is the feeling that someone always has your back – you aren't just here on your own" – Bjørn (Norway)



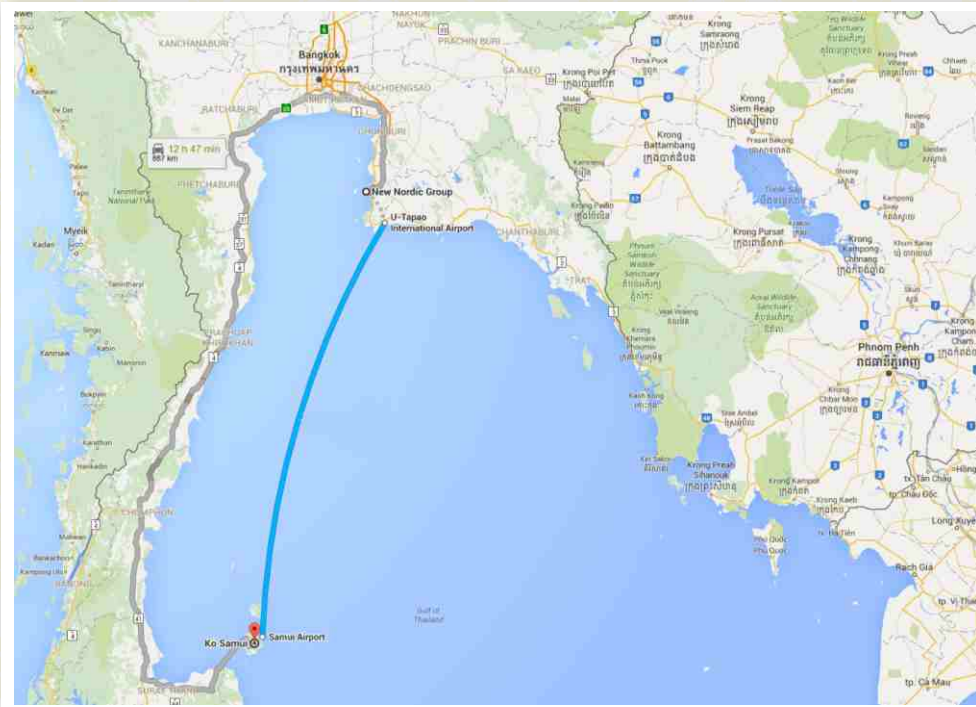
SAMUI BEACH HOTEL *A New Nordic Hotel*

New Nordic Samui Beach Resort is beautifully located on the beach with a private swimming pool and beachside restaurant. The resort is situated on the east coast of the island, at Lamai Beach.
Contact us for more information.

**KOH SAMUI
FACTS AND INFORMATION**



Getting to Koh Samui

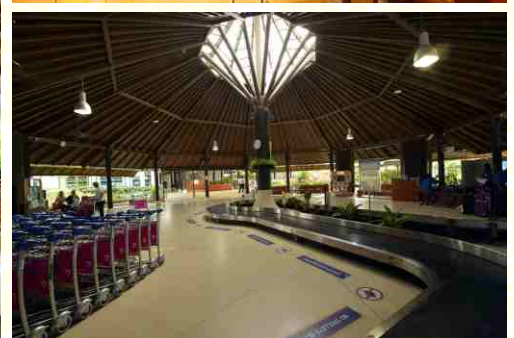


How to get there?

There are several ways of getting to Koh Samui. Most people travel by air, and between Bangkok and Koh Samui there are around 25 flights each way every day! It is a very busy route and the majority is operated by Bangkok Airways, which actually also is the owner of the airport. You can also go by plane from Utapao outside Pattaya, from Chiang Mai, from Singapore, from Kuala Lumpur and even from Hong Kong. Beside from travelling by air, you can go by bus or even train to Surat Thani, and then take the ferry from there to Koh Samui. The ferries leave mainly from Donsak on the mainland side, and takes about 45 mins for the Catamaran and 1,5 hrs for the car ferries.

SAMUI INTERNATIONAL AIRPORT

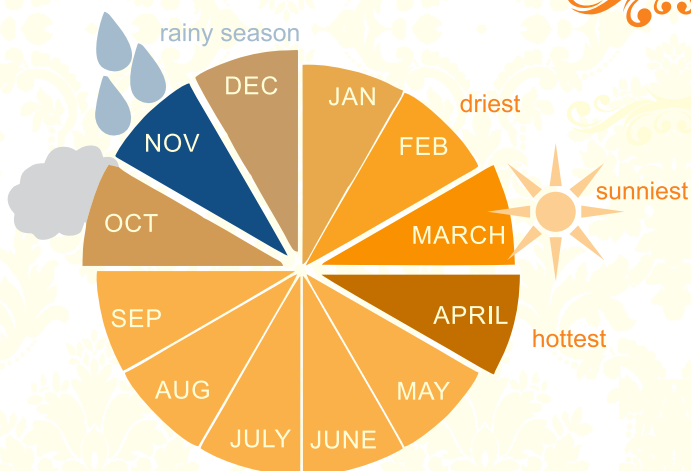
Samui International Airport's has a very unique style with its "bamboo- and-thatch" interior, which ensures that you get the relaxed "island" feeling the minute you step out of the airplane. The airport is located between Bophut and Chaweng beach, and opened in 1989. After its renovation in 2004, it today consists of two terminals where most of the public spaces are outdoors surrounded by tropical flowers and plants. The airport is operated by Bangkok Airways.





KOH SAMUI

Koh Samui is located in the Gulf of Thailand (bordering the South China Sea in the Pacific Ocean). The island is a "Amphoe" or district in the Surat Thani Changwat or province. Samui is divided into seven "Tambon" or administrative regions: Maenam, Bophut, Maret, Taling Ngam, Namuang, Lipa Noi and Angthong. Koh Samui became a backpackers destination in the late 70's. Today, all kinds of tourists from all over the whole world are visiting this easygoing "paradise". Samui is surrounded by more than sixty other islands, some small and inhabited, some are larger such as Koh Phangan and Koh Tao.



KOH SAMUI CLIMATE

The climate of Koh Samui is a little bit different than Phuket, Krabi and other parts of South Thailand, due to the fact that it is located in the South China Sea and rainy season is not as long and not as strong as in for example Phuket. Mid summer, July, can be really nice in Samui, while October and November is the wet season.

How to get around?

Going around the island is easy, either by car, van, motorcycle or even bicycle if you are interested in some kind of exercise while staying there. Roads are getting better, some still very small but the main roads quite big and easy to drive on.



KOH SAMUI BEACH AREAS

The most popular beach areas are Chaweng, Lamai, Bo Phut and Meanam Beach. But the market is still going and new areas of fantastic beaches are coming up constantly.

Chaweng is a 7 km long white, sandy beach on the North-east part of Samui, and the first area on the island to be developed for tourism. Nowadays, a lot of people gather here, and it can be crowded, especially in the high season.

Lamai beach is located in the south east part of Samui, just a 10 mins drive from Chaweng. It has a very nice beach, especially the southern part of it, with white sand and beautiful palm trees. Lamai is more quiet than Chaweng, and the atmosphere is laid back and you really feel like on holiday. The hotels in Lamai are spread along the beach road, on both sides, and none of them are far from the beach. Lamai have many different restaurants of all kind. Italian restaurants, international restaurants, fantastic seafood restaurants and many many Thai restaurants of all kinds serving fantastic Thai food. Also some part of the beach area have really tasteful seafood restaurants right on the beach.

Maenam, Big Buddha and Bo Phut Beach are all located in the north of Samui, and with very easy access from the airport. These beaches have become more and more popular, but still do not have the same variety of restaurants, shops as Lamai and Chaweng.



KOH SAMUI - GOLF COURSES

Koh Samui is not the ideal place for golfing, compared to other places in Thailand. If your main purpose of visiting Thailand is golfing, we would recommend New Nordic Pattaya-Jomtien area with more than 20 top international golf courses within 35 minutes driving from New Nordic in Pattaya. However, they do have some very nice golf courses also in Samui, and ideal to use as a break from your beach holiday. One of the good things about golf courses in Samui is that they are all very easily accessible from the beach areas. Here are 2 recommended golf courses in Samui:



RECOMMENDED GOLF COURSES



bookings@rsgcc.co.th
+66 (0) 77 45 84 49

ROYAL SAMUI GOLF & COUNTRY CLUB

This golf course is a 9-hole course and founded in 2006. The location is on the mountain side of Lamai and Chaweng, with very easy and quick access from Lamai Beach. The road going up there is made of concrete, but still we recommend to use 4-wheel drive when going there. The view from the golf course is one of the most fantastic views you can have in Samui, with view not only to Lamai and Chaweng but also to neighboring islands. This is also a golf course that all golf players will enjoy, irrespectively of golf experience from before.



www.santiburi-hotel.de
+66 (0) 77 421700-8
santiburi@bservice.de

SANTIBURI SAMUI COUNTRY CLUB

This is a 18-hole championship golf course and is actually known as one of the most beautiful golf courses in Asia. The golf course is located in the mountain area of Samui and shaped like a natural mountain landscape. There are steep uphill and downhill slopes and long windy fairways. Location is close to Maenam Beach, on the northern part of the island, up in the mountain area.

RECOMMENDED SHOPPING CENTRE



Opening Hours: 10:00 – 22:30
Tel: 077- 962777

CENTRAL FESTIVAL SAMUI

Central Festival is located by the main road going through the island, and close to the Chaweng area. This is one of the main shopping centers in Samui and from Lamai it takes about 20 mins by car. They are the most complete and one of the largest shopping complex in Samui, with three story's and around 90,000sqm of retail space. There is also a garden area and a kid's playground and many many shops and several restaurants. Starbucks, The Coffee Club, Swensen's ice cream are among the food and beverage places. Adidas, Camel, Esprit, Geox, Playboy, Rip Curl, Jim Thompson and X-Act are among the brands located in Central Festival.



Opening Hours: Every day from 17:00
Location: Lamai centre

LAMAI NIGHT PLAZA

Lamai Night Plaza is located in the center of Lamai opposite the main Mc Donalds. This is a kind of Thai market/night bazaar shopping with a lot of different things to buy, varying from sarongs, attractive purses, bags, belts, T-shirts, rolling luggage, striking and colourful lamps, bed covers, electronics goods an, Breitling and Cartier watches. The area also have a food center and a pub on the side, so easy to sit down and relax with a beer or soda water before continuing shopping.



Office Address: Bophut, Koh Samui, Surat Thani
Tel : 077-425-499, 077-425-500
<http://www.thewharfsamui.com/>

THE WHARF

This is a brand new shopping center in Samui, located close to the Firshermans Village in Bophut Beach, on the northern part of the island. The shopping center is around 20.000sqm and have around 120 shops. They have parking for more than 200 cars and 300 motorcycles. The opening date was in December 2014, and still more and more shops are coming. The area is mainly formed as an outdoor beachfront shopping center with the architecture as a mix of Asian and Western style. There are several restaurants inside the area; seafood, western, Thai, bakery etc.



Opening Hours: Sunday from 16:30 – 00:00
Location: On Samui Ring Road
northeast of Lamai Centre

TESCO LOTUS

Tesco Lotus is located along the main road through Samui, close to Bangkok Samui Hospital. They have many different shops, and a mix of local shops and international shops. They also have electric items and household items, as well as car accessories and toys. Very easy access from the main road.



New Nordic
KOH SAMUI
LAMAI HOTEL AND RESORT