

ASTRA  
SKY RIVER

CONDOMINIUM

Images are for advertising purpose only

A grayscale photograph of a person floating on their back in a large body of water. The person's head and shoulders are above the water, and their arms are extended horizontally. In the background, a city skyline with several tall buildings is visible under a hazy sky. The water is calm, and the overall mood is serene and expansive.

# FEEL THE SKY RIVER

All rendering and illustrations are artist's impressions only and cannot be regarded as representations of facts.  
The company reserves the right to change these term and conditions at any time without prior notice

Images are for advertising purpose only

SPIRIT of LANNA  
LIGHT • CULTURE • RIVER

All rendering and illustrations are artist's impressions only and cannot be regarded as representations of facts.  
The company reserves the right to change these term and conditions at any time without prior notice



**Astra Sky River**  
is situated on one of the city's  
most valuable pieces of land,  
right by the business precinct.

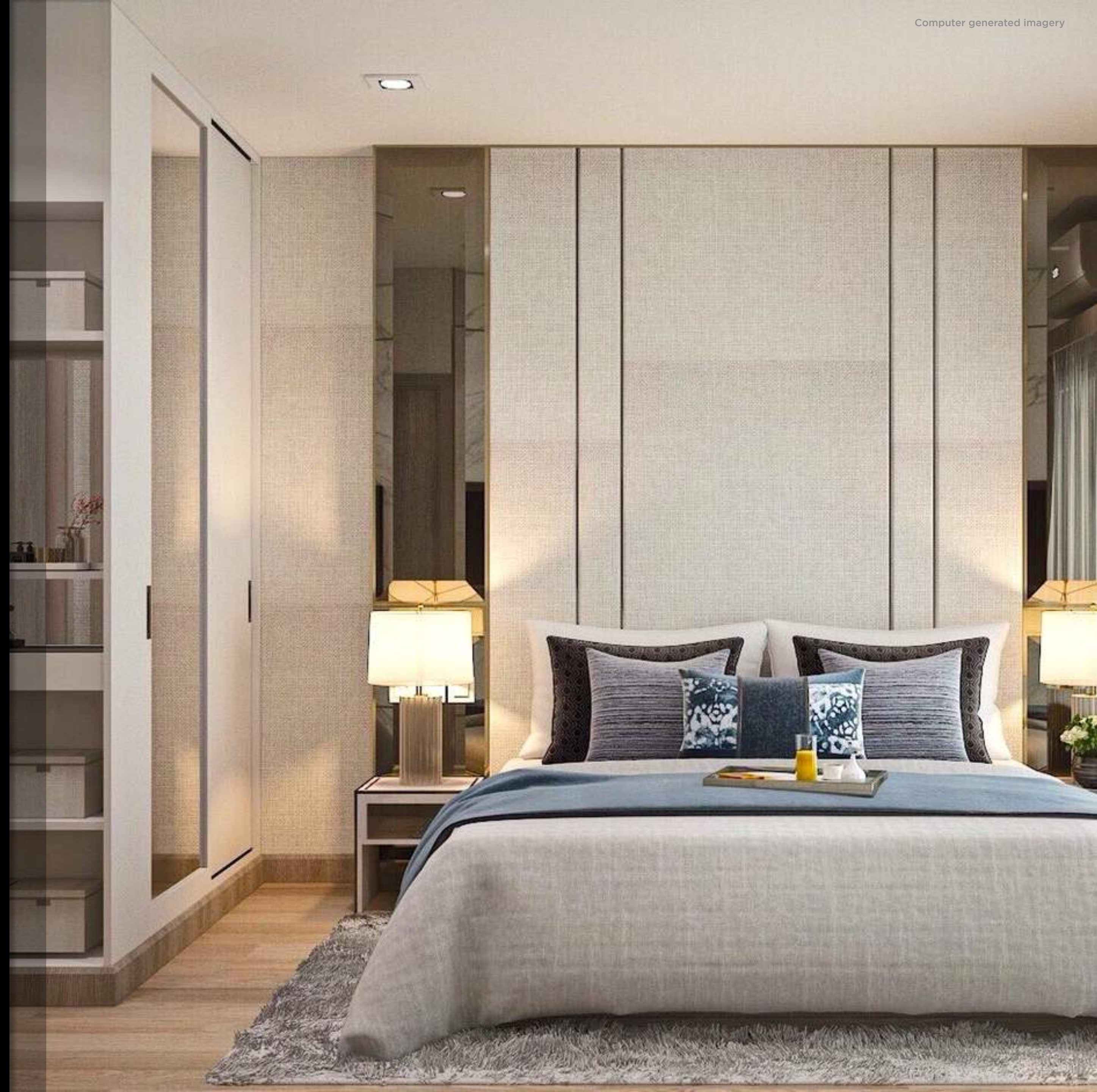
An iconic 17-storey residential tower  
comprising of 520 units upon 1.5 acres of  
prime land. Astra Sky River luxury residence,  
Changkran Road Chiang Mai, offers the most  
exclusive residences where luxury and  
modern-Lanna decor are combined to give  
you a high-class travel experience.

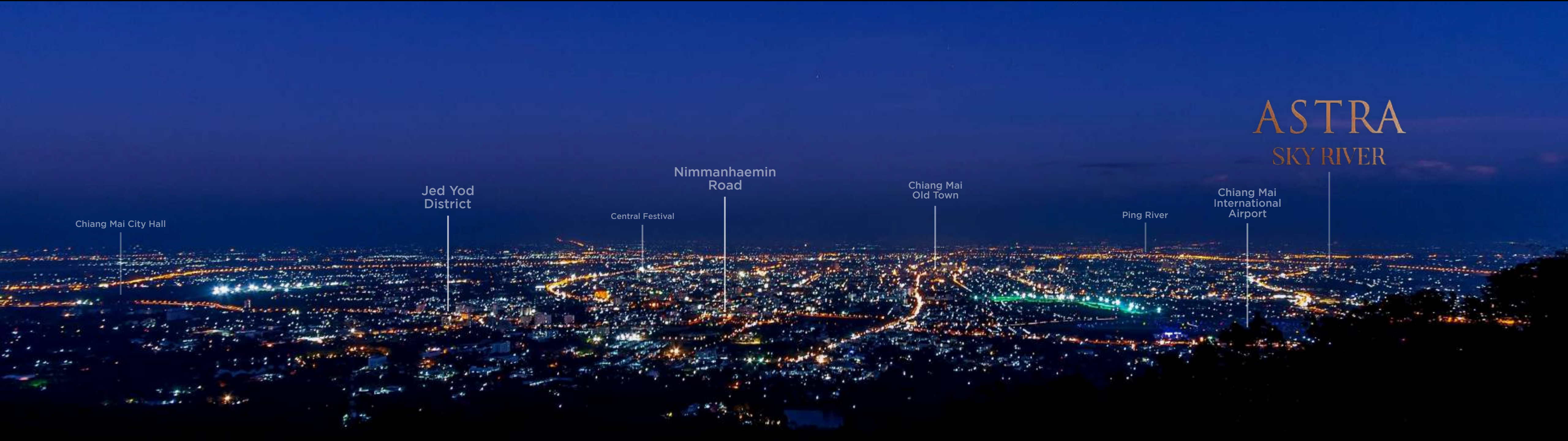
All rendering and illustrations are artist's impressions only  
and cannot be regarded as representations of facts.  
The company reserves the right to change these term and  
conditions at any time without prior notice

## Elegance with a magnificent harmony of fabrics and bronze

The designers of Astra Sky River had conceptualised an extraordinary condominium development plan consisting of 6 residence types, an open rooftop swimming pool, and a range of luxury facilities. All complemented by modern-Lanna inspired interior using decorative elements of bronze and fine fabrics.

All rendering and illustrations are artist's impressions only and cannot be regarded as representations of facts. The company reserves the right to change these term and conditions at any time without prior notice



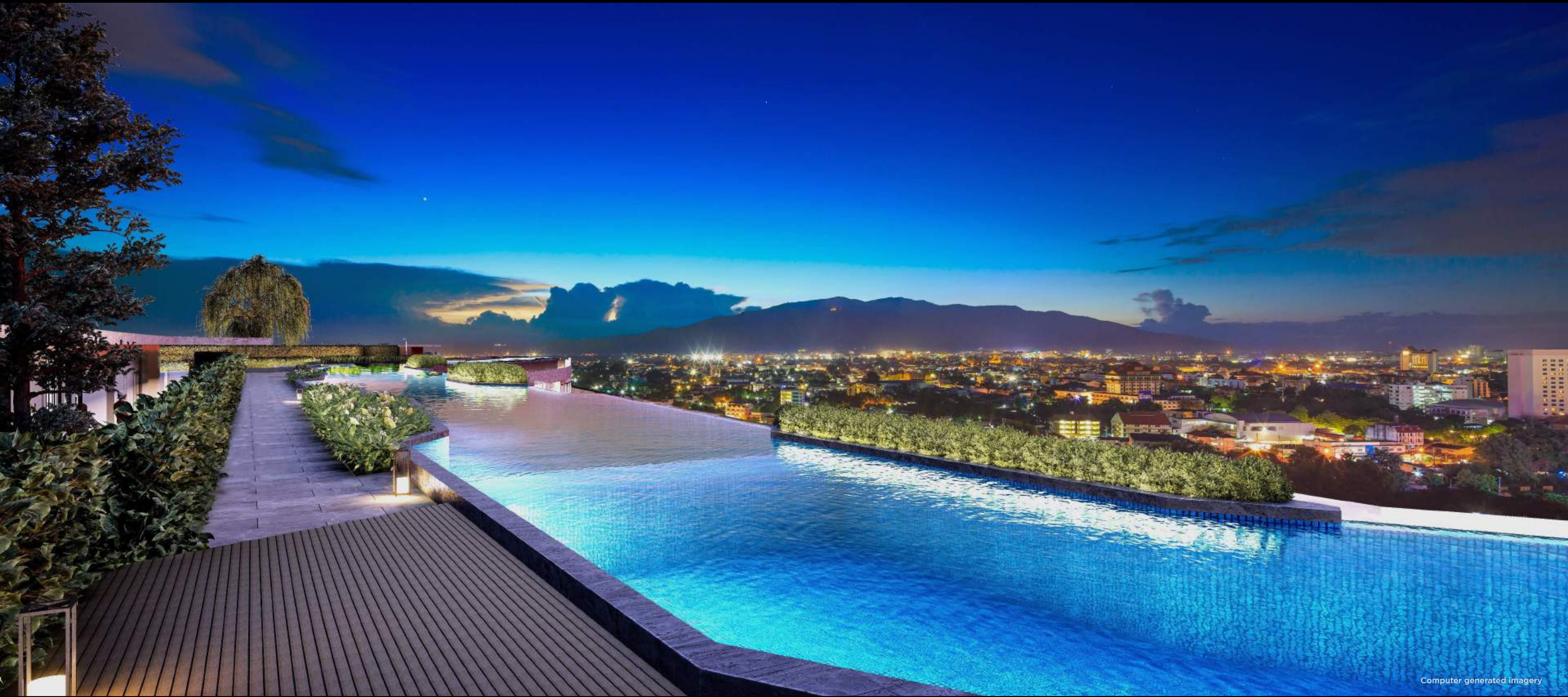


# ASTRA SKY RIVER

## SKY RIVER AT ITS FINEST

With the convenient location close to Chiang Mai downtown, this modern-Lanna style condominium will give you a spectacular view of Chiang Mai city surrounded by its mountainous landscapes from the rooftop pool. Presenting you the true spirit of Lanna.

All rendering and illustrations are artist's impressions only and cannot be regarded as representations of facts.  
The company reserves the right to change these term and conditions at any time without prior notice



Computer generated imagery

All rendering and illustrations are artist's impressions only and cannot be regarded as representations of facts.  
The company reserves the right to change these term and conditions at any time without prior notice



All rendering and illustrations are artist's impressions only and cannot be regarded as representations of facts.  
The company reserves the right to change these term and conditions at any time without prior notice





Computer generated imagery

## main entrance

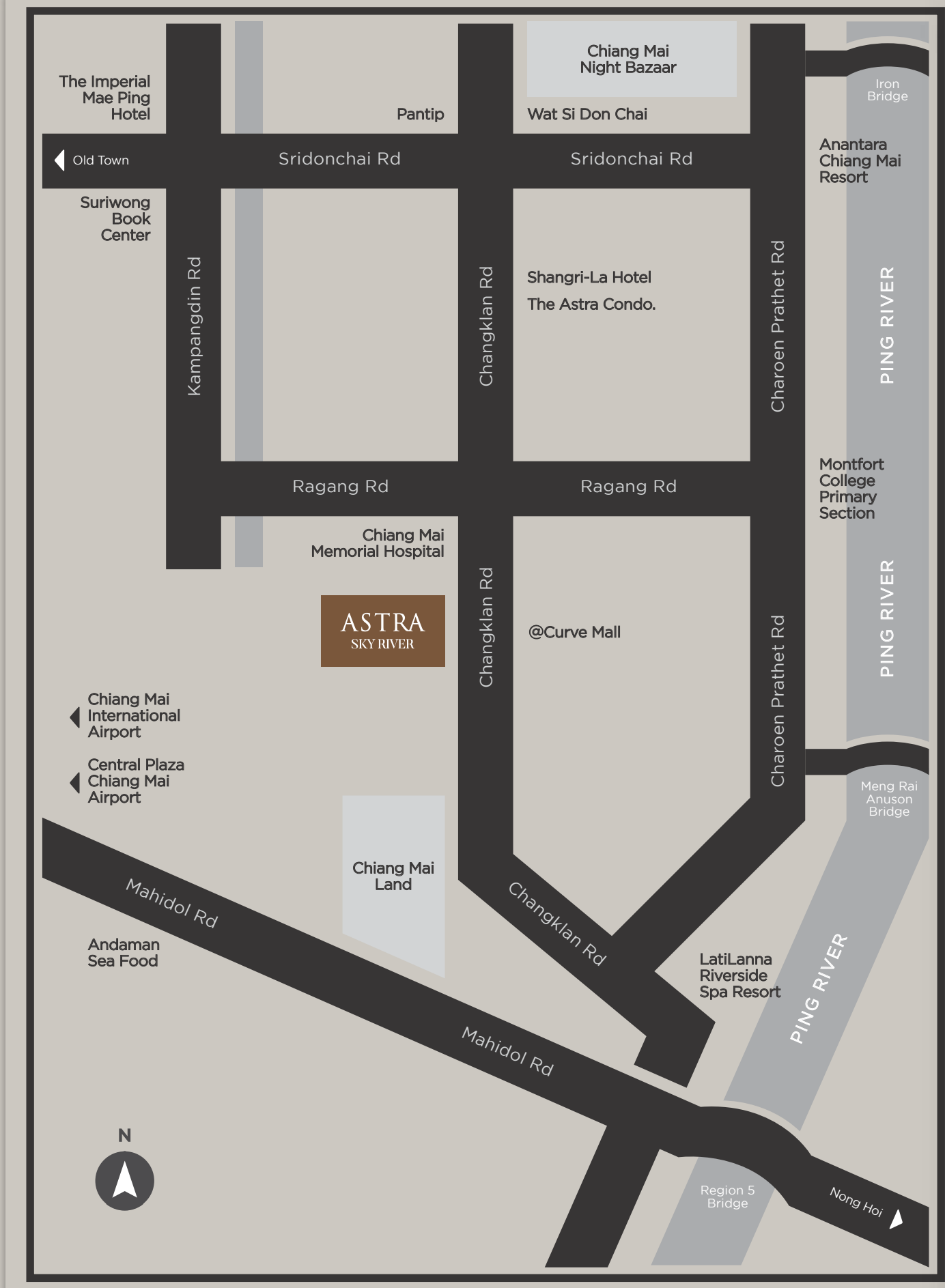
All rendering and illustrations are artist's impressions only and cannot be regarded as representations of facts.  
The company reserves the right to change these term and conditions at any time without prior notice



## PROJECT DETAILS

|                                       |   |
|---------------------------------------|---|
| <b>LOCATION</b>                       | Changklan Road  |
| <b>PROJECT AREA<br/>PROJECT TYPES</b> | 4-2-68 Rai / Approx. 15 Acre<br>Condominium 17-Storey Building  |
| <b>TOTAL UNITS</b>                    | 520 Units   |
|                                       | Studio Type / 26 Units<br>Usage Space: approx. 28 Sq.m.   |
|                                       | X1 Bedroom Type / 195 Units<br>Usage Space: approx. 34-42 Sq.m.   |
|                                       | X1 Bedroom Plus Type / 104 Units<br>Usage Space: approx. 44 Sq.m.   |
|                                       | X1 Bedroom Plus Garden Type / 104 Units<br>Usage Space: approx. 47 Sq.m.  |
|                                       | X2 Bedroom Plus Type / 65 Units<br>Usage Space: approx. 73 Sq.m.  |
|                                       | X3 Bedroom Type / 26 Units<br>Usage Space: approx. 97 Sq.m.   |
| <b>NO. of PARKING</b>                 | approx. 45%   |
| <b>AMENITIES</b>                      | Park(Green Field) / Swimming Pool<br>Lounge / Co-Working Space<br>Meeting Room / Fitness  |
| <b>NEARBY</b>                         | Chiang Mai Night Bazaar 5 min.<br>Chiang Mai International Airport 10 min.<br>Chiang Mai Ram Hospital 8 min.<br>Central Plaza Chiang Mai Airport 7 min. |

All rendering and illustrations are artist's impressions only and cannot be regarded as representations of facts.  
The company reserves the right to change these term and conditions at any time without prior notice



The true heart of Chiang Mai city-centre. Astra Sky River directly front the main Changklan road and is on the priest of prime city-centre land.

18°46'20.2"N 98°59'55.3"E  
18.772279, 98.998697

All rendering and illustrations are artist's impressions only and cannot be regarded as representations of facts. The company reserves the right to change these term and conditions at any time without prior notice

# amenities

All rendering and illustrations are artist's impressions only and cannot be regarded as representations of facts.  
The company reserves the right to change these term and conditions at any time without prior notice

**Designed to create a lifestyle unlike any other,**  
Private Residences combine the legendary modern-Lanna decor  
with the most superior condo-inspired amenities.

---

**GROUND FLOOR**

lobby / reception  
lift hall  
entrance  
mail box  
drop-off  
car parking

**1A 2A FLOOR**

lift hall  
car parking

**3RD FLOOR**

lift hall  
car parking  
common garden

**17TH FLOOR**

fitness  
lift hall  
restroom / bathroom  
meeting room  
swimming pool  
common garden  
co-working space

All rendering and illustrations are artist's impressions only and cannot be regarded as representations of facts.  
The company reserves the right to change these term and conditions at any time without prior notice

ASTRA  
SKY RIVER



Computer generated imagery

## lobby /reception space

All rendering and illustrations are artist's impressions only and cannot be regarded as representations of facts.  
The company reserves the right to change these term and conditions at any time without prior notice

ASTRA  
SKY RIVER



Computer generated imagery

mailbox room

All rendering and illustrations are artist's impressions only and cannot be regarded as representations of facts.  
The company reserves the right to change these term and conditions at any time without prior notice

# ASTRA SKY RIVER



Computer generated imagery

## library space

All rendering and illustrations are artist's impressions only and cannot be regarded as representations of facts.  
The company reserves the right to change these term and conditions at any time without prior notice



ASTRA  
SKY RIVER

co-working space

All rendering and illustrations are artist's impressions only and cannot be regarded as representations of facts.  
The company reserves the right to change these term and conditions at any time without prior notice

Computer generated imagery

ASTRA  
SKY RIVER



Computer generated imagery

meeting room

All rendering and illustrations are artist's impressions only and cannot be regarded as representations of facts.  
The company reserves the right to change these term and conditions at any time without prior notice



Computer generated imagery

## fitness room

All rendering and illustrations are artist's impressions only and cannot be regarded as representations of facts.  
The company reserves the right to change these term and conditions at any time without prior notice

# ASTRA

SKY RIVER



Computer generated imagery

## sky river rooftop

All rendering and illustrations are artist's impressions only and cannot be regarded as representations of facts.  
The company reserves the right to change these term and conditions at any time without prior notice

**master**plan

All rendering and illustrations are artist's impressions only and cannot be regarded as representations of facts.  
The company reserves the right to change these term and conditions at any time without prior notice



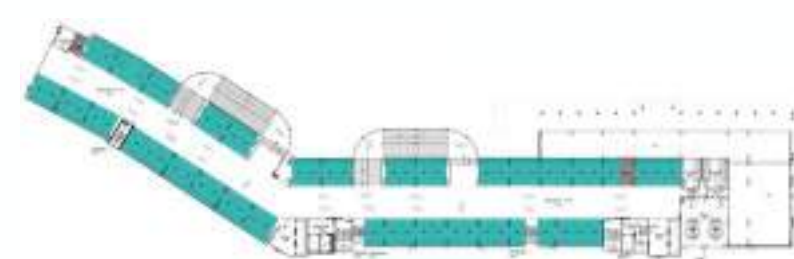
### building master plan

All rendering and illustrations are artist's impressions only and cannot be regarded as representations of facts.  
The company reserves the right to change these term and conditions at any time without prior notice

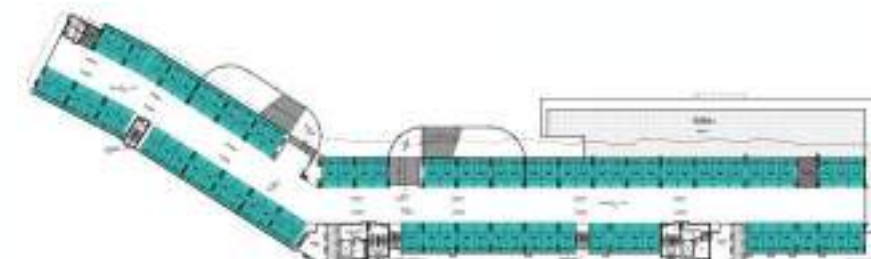
# ASTRA SKY RIVER



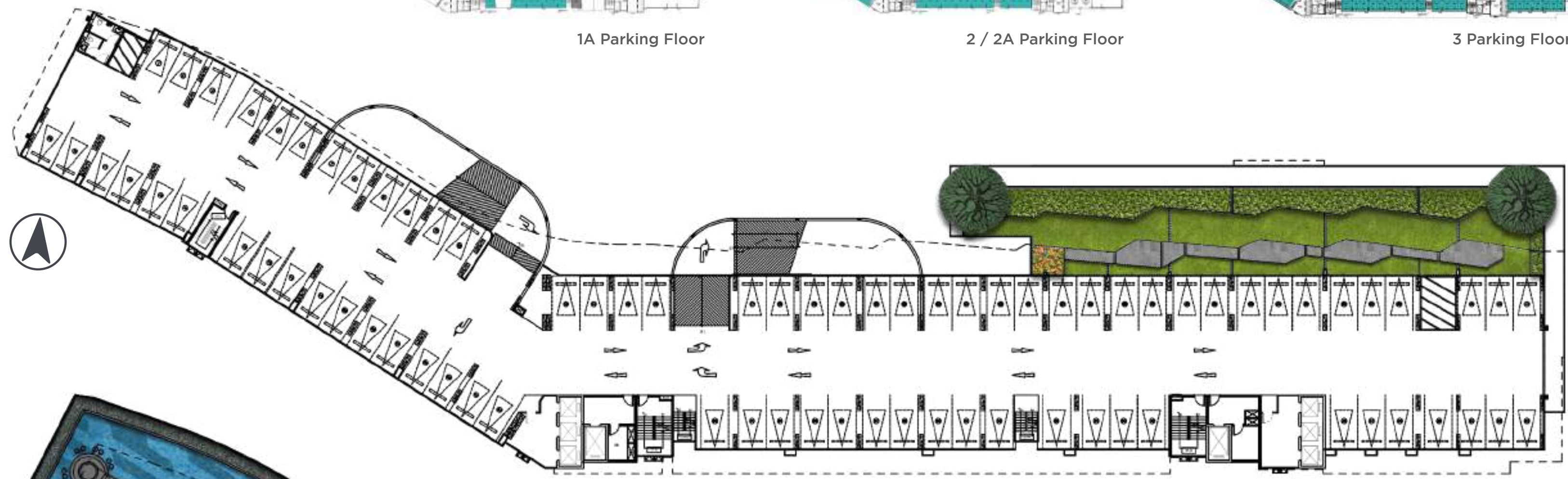
1A Parking Floor



2 / 2A Parking Floor

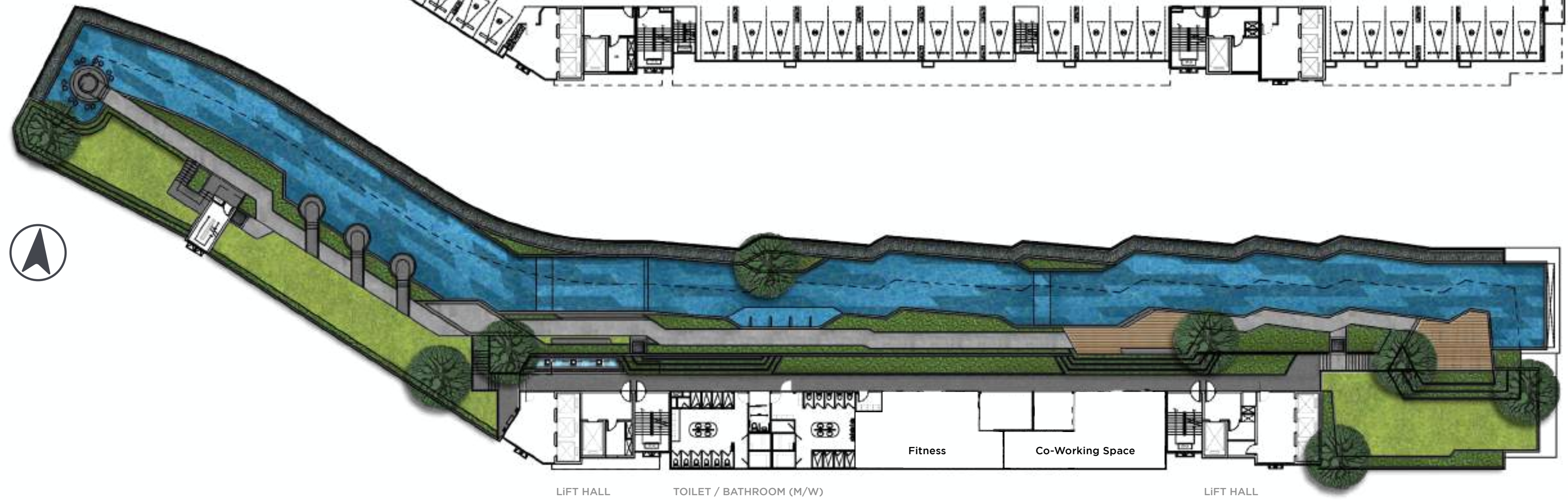


3 Parking Floor



## PARKING FLOOR PLAN amenities

- lift hall
- car parking
- common garden



## ROOFTOP FLOOR PLAN amenities

- fitness
- lift hall
- bathroom
- meeting room
- swimming pool
- common garden
- co-working space

All rendering and illustrations are artist's impressions only and cannot be regarded as representations of facts.  
The company reserves the right to change these term and conditions at any time without prior notice



All rendering and illustrations are artist's impressions only and cannot be regarded as representations of facts.  
The company reserves the right to change these term and conditions at any time without prior notice



roomlayer

All rendering and illustrations are artist's impressions only and cannot be regarded as representations of facts.  
The company reserves the right to change these term and conditions at any time without prior notice

**ROOM LAYER**  
residence type

**Studio type**  
residence

X26 Units  
usage space: approx. 28 Sq.m.



**X1 bedroom type**  
residence

X195 Units  
usage space: approx. 35 Sq.m.



**X1 bedroom +plus**  
residence

X104 Units  
usage space: approx. 44 Sq.m.



● **Plus room**  
Option

X1 bedroom +plus  
X1 bedroom +plus/garden  
X2 bedroom +plus



All rendering and illustrations are artist's impressions only and cannot be regarded as representations of facts.  
The company reserves the right to change these term and conditions at any time without prior notice

**ROOM LAYER**  
residence type

**X1 bedroom +plus/garden**  
residence

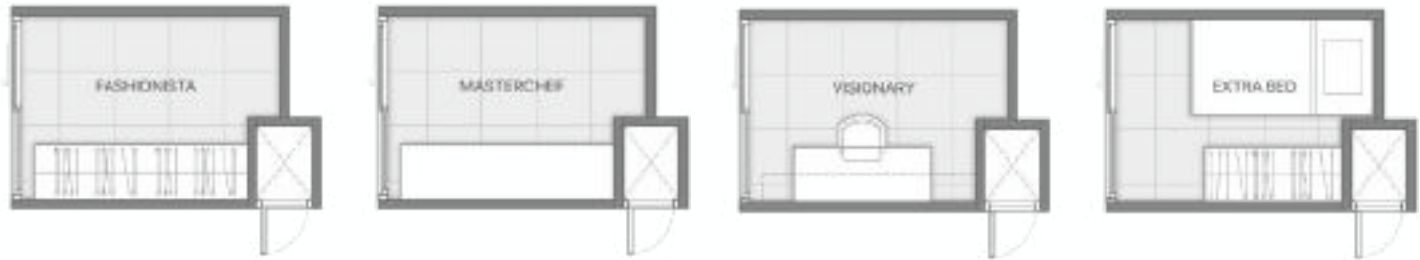
X104 Units  
usage space: approx. 47 Sq.m.

**X2 bedroom +plus**  
residence

X65 Units  
usage space: approx. 73 Sq.m.

**X3 bedroom type**  
residence

X26 Units  
usage space: approx. 97 Sq.m.



● **Plus room**  
Option

- X1 bedroom +plus
- X1 bedroom +plus/garden
- X2 bedroom +plus

All rendering and illustrations are artist's impressions only and cannot be regarded as representations of facts. The company reserves the right to change these term and conditions at any time without prior notice

ASTRA  
SKY RIVER



Computer generated imagery

**studio type** residence

All rendering and illustrations are artist's impressions only and cannot be regarded as representations of facts.  
The company reserves the right to change these term and conditions at any time without prior notice

ASTRA  
SKY RIVER



Computer generated imagery

**X1 bedroom type residence**

All rendering and illustrations are artist's impressions only and cannot be regarded as representations of facts.  
The company reserves the right to change these term and conditions at any time without prior notice

ASTRA  
SKY RIVER



Computer generated imagery

**X1 bedroom plus** residence

All rendering and illustrations are artist's impressions only and cannot be regarded as representations of facts.  
The company reserves the right to change these term and conditions at any time without prior notice

ASTRA  
SKY RIVER



Computer generated imagery

**X2 bedroom plus** residence

All rendering and illustrations are artist's impressions only and cannot be regarded as representations of facts.  
The company reserves the right to change these term and conditions at any time without prior notice

ASTRA  
SKY RIVER



Computer generated imagery

**X3 bedroom type** residence

All rendering and illustrations are artist's impressions only and cannot be regarded as representations of facts.  
The company reserves the right to change these term and conditions at any time without prior notice





SPIRIT of LANNA  
LIGHT • CULTURE • RIVER

All rendering and illustrations are artist's impressions only and cannot be regarded as representations of facts.  
The company reserves the right to change these term and conditions at any time without prior notice

An aerial night view of a city, likely Astoria, Oregon, showing a dense grid of lights and a winding river. The sky is a deep, dark blue. The city lights are a mix of warm yellow and white, with some green lights visible in the lower right. The river is illuminated with a bright green light, creating a glowing path through the city.

# ASTRA

## SKY RIVER


All rendering and illustrations are artist's impressions only and cannot be regarded as representations of facts.  
The company reserves the right to change these term and conditions at any time without prior notice



ORNSIRIN

097 924 4230

[www.ornsirin.co.th](http://www.ornsirin.co.th)

 [ornsirin.chiang.mai](https://www.facebook.com/ornsirin.chiang.mai)



North Home Company Limited, Registered No.0505531000630. Address: 79 Moo 8, San Pu Loei Subdistrict, Doi Saket District, Chiang Mai 50220.  
President, Mr. Predikorn Buranupakorn. Registered Capital 500,390,000 Baht (Paid Capital), Astra Sky River located on Chang klan Road, Chang klan Subdistrict Muang Chiang Mai District, Chiang Mai 50000.

Residential Condominium 17 floors, 520 units Land area approximately 4-2-68 Rai. Expected construction starting in March 2020. Expected construction completed in July 2022.  
All images are computer generated graphics. The company reserves the right to change the project's details without prior notice.