



BUILDING BETTER LIVES



SINCE 1987





THE  
**LOFTS**  
YENNAKART



THE  
**LEGEND**  
SALADAENG



THE  
**LOFTS**  
SATHORN



THE LAKES  
CONDOMINIUM



THE RIVER



185  
RAJADAMRI



THE  
**LOFTS**  
ASOKE



**MEWS**  
YEN AKAT  
BY RAIMON LAND



THE  
**LOFTS**  
EKKAMAI



UNİXX  
SOUTH PATTAYA



**ZIRE**  
WONGAMAT



**Northpoint**  
ABSOLUTE BEACHFRONT LIVING



**NORTHSHORE**  
CONDOMINIUM



**KATA  
GARDENS**  
Tropical Island Living



The  
**Heights**  
Phuket

Raimon Land is the leading high-end real estate developer of Thailand. We are the first developer in the country to provide such levels of exclusivity for customers within the luxury and super-luxury segment, with numerous outstanding projects to its name. The company's philosophy is encapsulated by its vision statement – Building Better Lives.

Since 2004, the company has completed 14 residential properties in Thailand with a total project value of approximately THB 48.6 billion; including Mews Yen Akat by Raimon Land, The Lofts Ekkamai, 185 Rajadamri, The River, The Lofts Yennakart, The Legend Saladaeng, The Lakes and The Lofts Sathorn in Bangkok; Unixx South Pattaya, Zire Wongamat, Northpoint, and Northshore in Pattaya; and The Heights Phuket and Kata Gardens in Phuket. Additional residential project currently under development, The Lofts Asoke.

Raimon Land actively seeks out for prime locations in Bangkok to expand its portfolio. Raimon Land has been awarded 'Property Development Company of the Year' by Frost & Sullivan Awards, 2017. A reflecting the company's outstanding success.



Raimon Land has been consistently recognized as one of the best developers in the country. In 2016, the company has been awarded the Condominium Category Award for Zire Wongamat in Pattaya and Residential High - Rise Development Award for The Lofts Ekkamai at the Asia-Pacific Property Awards. Raimon Land's 185 Rajadamri won "Best Luxury Condo Development (Bangkok)" at the Thailand Property Awards 2013. In 2012, The River Condominium was awarded with the titles 'Best Condo Development' at the South East Asia Property Awards, and 'Best Luxury Condo Development (Bangkok)' plus 'Best Condo Development (Thailand)' at the Thailand Property Awards. Northpoint had also won Best Condo Development (Eastern Seaboard) at the 2010 ceremony, and had previously won the same award in 2008. Moreover, Raimon Land was also presented with the Best Developer awards for two consecutive years in 2007 and 2008.



THE  
LOFTS  
SILOM

Symphony of Life



AS OF 7 JULY 2017

# Project information

|                  |                                                       |
|------------------|-------------------------------------------------------|
| Location         | : Pramuan road                                        |
| Type of property | : Freehold Condominium                                |
| Concept          | : High Rise Condominium                               |
| Land Area        | : 2-0-10 Rai (3,240 sq.m)                             |
| Towers           | : 1 Tower, 37 Storeys                                 |
| Completion date  | : Approx. Q3/2020                                     |
| Common fee       | : 90 Baht/sq.m./ month (payable 12 months in advance) |
| Sinking fund     | : 800 Baht/sq.m (payable one time upon transfer date) |

## UNIT TYPES

High Ceiling Hybrid = Ceiling approx. 4.7 m. in primary spaces

Simplex = Ceiling approx. 3 m. in primary spaces

Duplex = Ceiling approx. 5.6 m. in primary spaces

Penthouse = Ceiling approx. 5 m. in primary spaces

## FACILITIES

- Garden entrance driveway
- Double-height forecourt and double – height lobby
- Children’s playground in garden
- Residences herb garden on 9<sup>th</sup> floor
- 25 m. infinity edge pool, Kid’s pool and in-pool Jacuzzi (all pools come with purified water filtration system)
- Sky deck and sky lounge with panoramic city view
- 24 hrs. security monitoring with access card system
- Sheltered vehicle drop-off area
- Ground floor aroma garden with pavilion
- Study room with garden view
- Double – height sky gym with panoramic view
- Individual male and female steam rooms
- Wi-fi in lobby and pool areas

# Location and Map

Silom is the beating heart of Bangkok, with world – famous restaurants sitting alongside some quaint, historic buildings and art galleries. It’s also regarded by many as the capital’s central business district. Whatever you are looking for, Silom has it.

- 400 m. to BTS Surasak
- 600 m. to Expressway
- 250 m. to Central Silom
- 50 m. to Kalaprapruek (restaurant)
- 140 m. to Schools
- 700 m. to Hospitals



# Neighbourhood - Hotels



MANDARIN ORIENTAL HOTEL



SHANGRI - LA HOTEL



LEBUA AT STATE TOWER

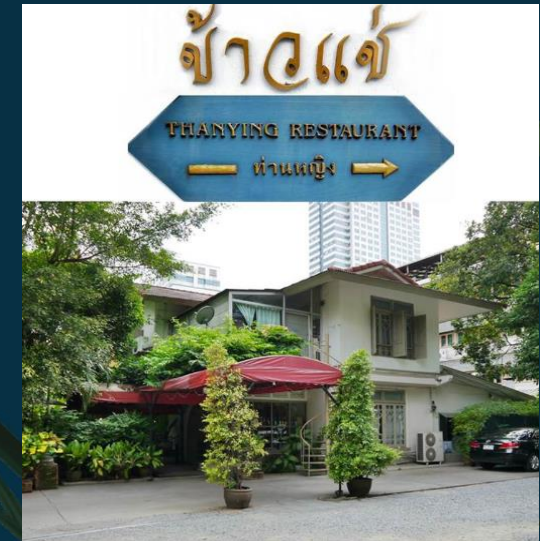


MODE SATHORN



LE MERIDIEN BANGKOK

# Neighbourhood – Shopping malls, Restaurants





# Neighbourhood - Offices



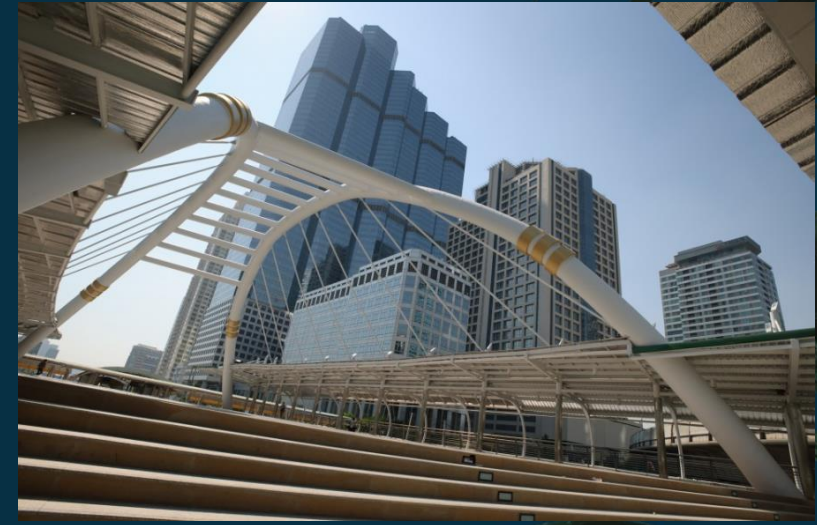
SATHORN SQUARE



VORAWAT BUILDING



JEWELRY TRADE



EMPIRE TOWER



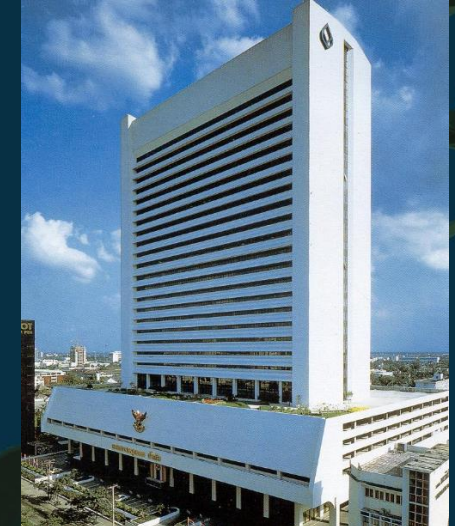
SATHORN CITY TOWER



UOB ROBOT BUILDING



THAI CC TOWER



BANGKOK BANK HEAD OFFICE



BANGKOK CHRISTIAN COLLEGE



ASSUMPTION CONVENT



SHREWSBURY INTERNATIONAL SCHOOL



CHULALONGKORN UNIVERSITY



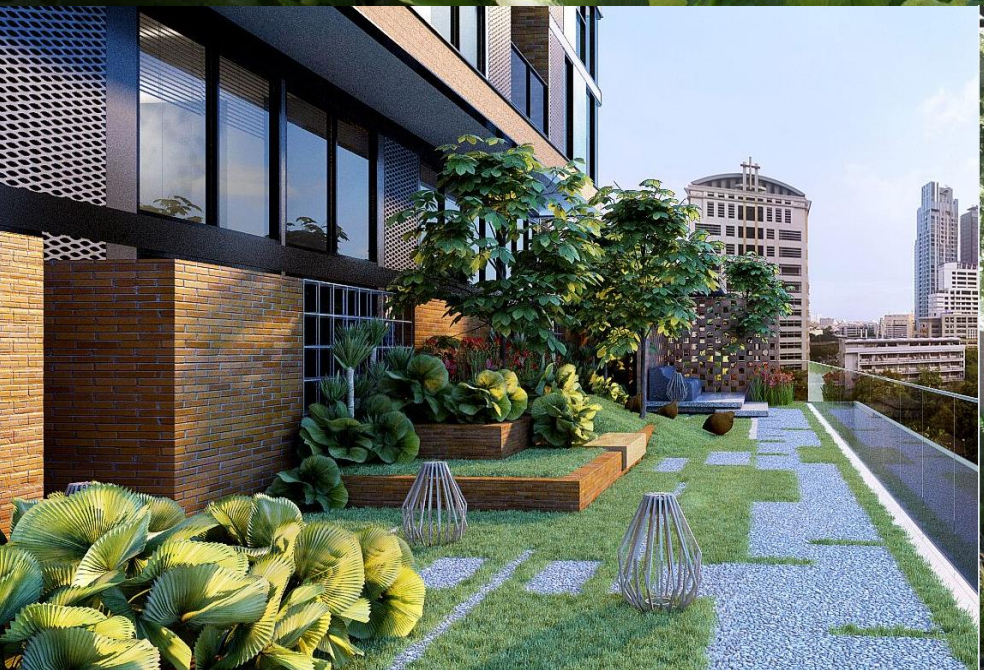
ST. JOSEPT CONVENT



SAINT LOUIS SUKSA SCHOOL



- ① Garden Entrance Driveway
- ② Sheltered Vehicle Drop-off
- ③ Double Height Forecourt
- ④ Lobby
- ⑤ Kid's Playground in Garden
- ⑥ Garden Working Space
- ⑦ Courtyard
- ⑧ Garden Pavilion







THE  
LOFTS  
SILOM



AS OF 7 JULY 2017